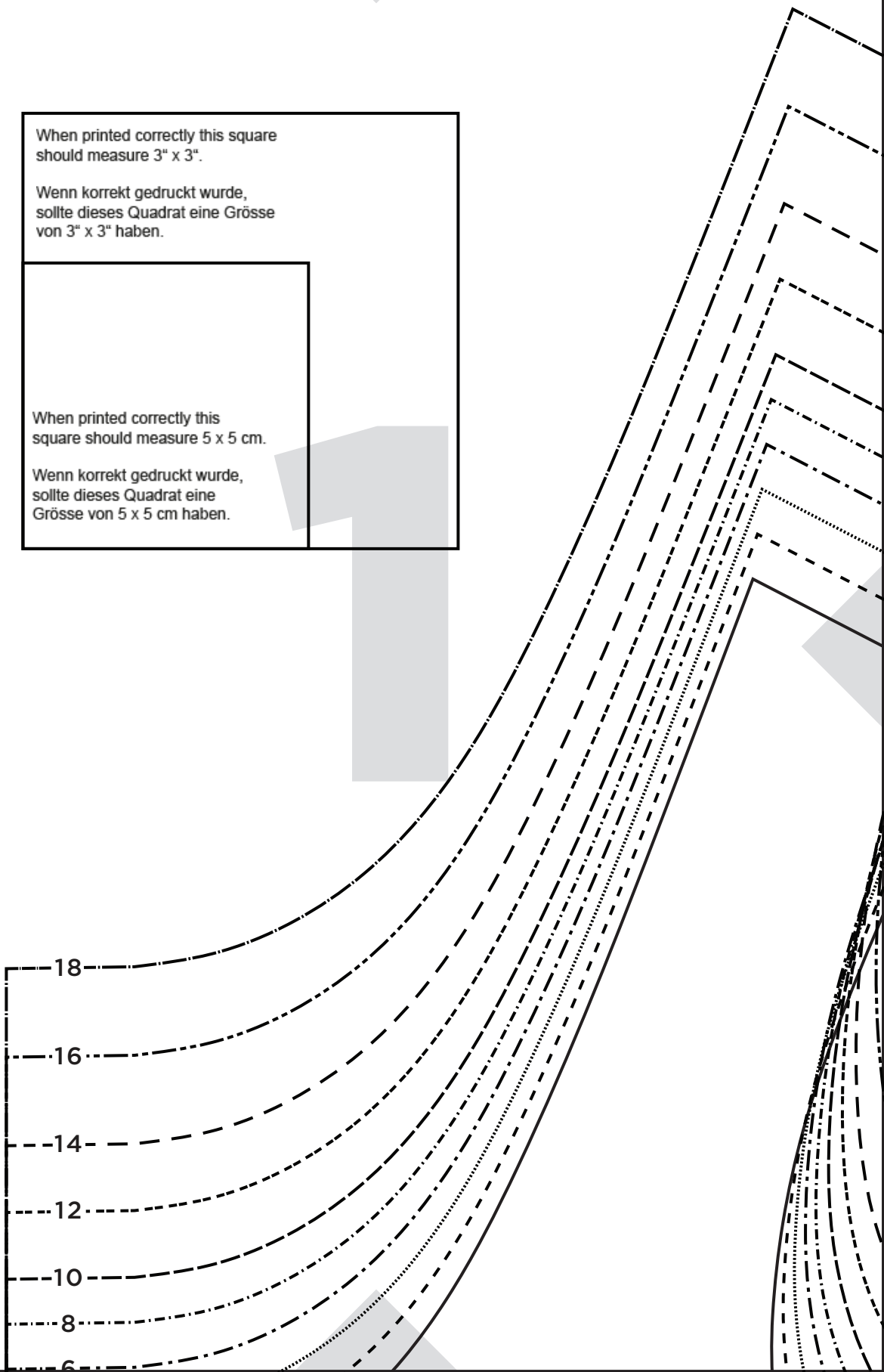


When printed correctly this square should measure 3" x 3".

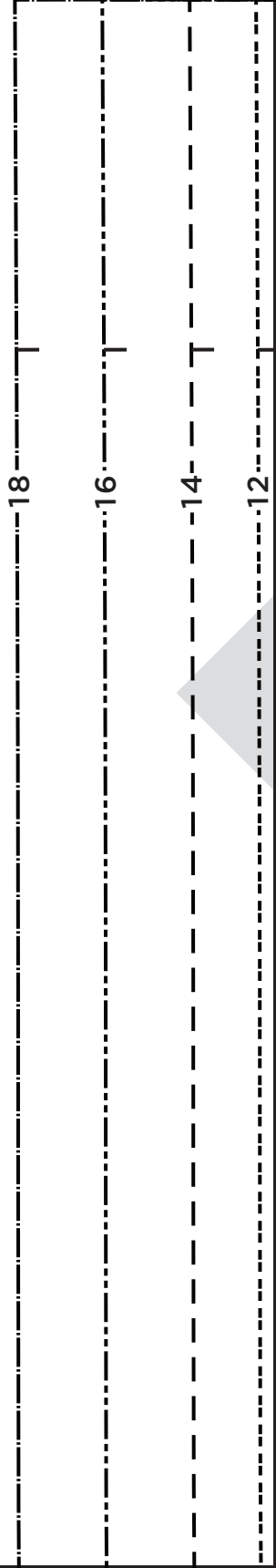
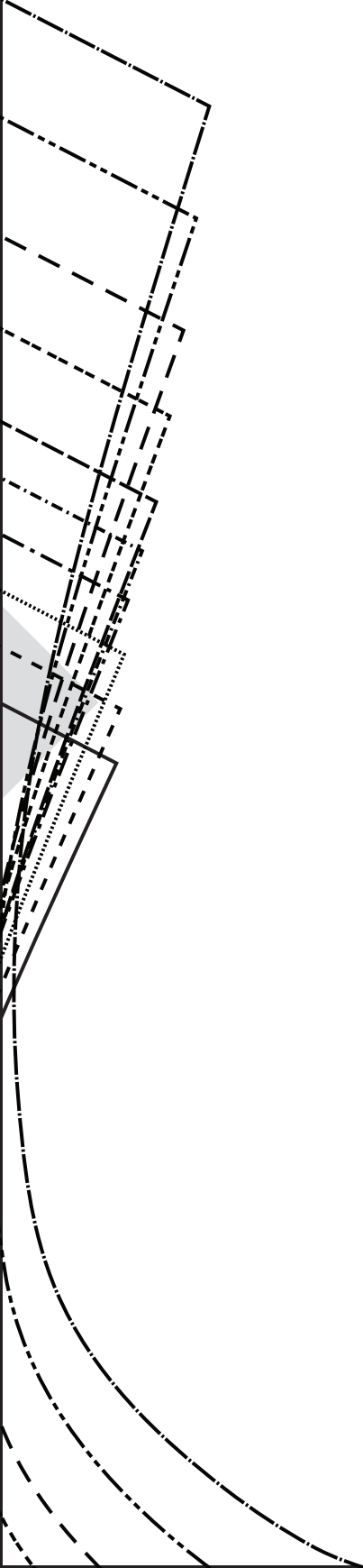
Wenn korrekt gedruckt wurde, sollte dieses Quadrat eine Größe von 3" x 3" haben.

When printed correctly this square should measure 5 x 5 cm.

Wenn korrekt gedruckt wurde, sollte dieses Quadrat eine Größe von 5 x 5 cm haben.



2



10

8

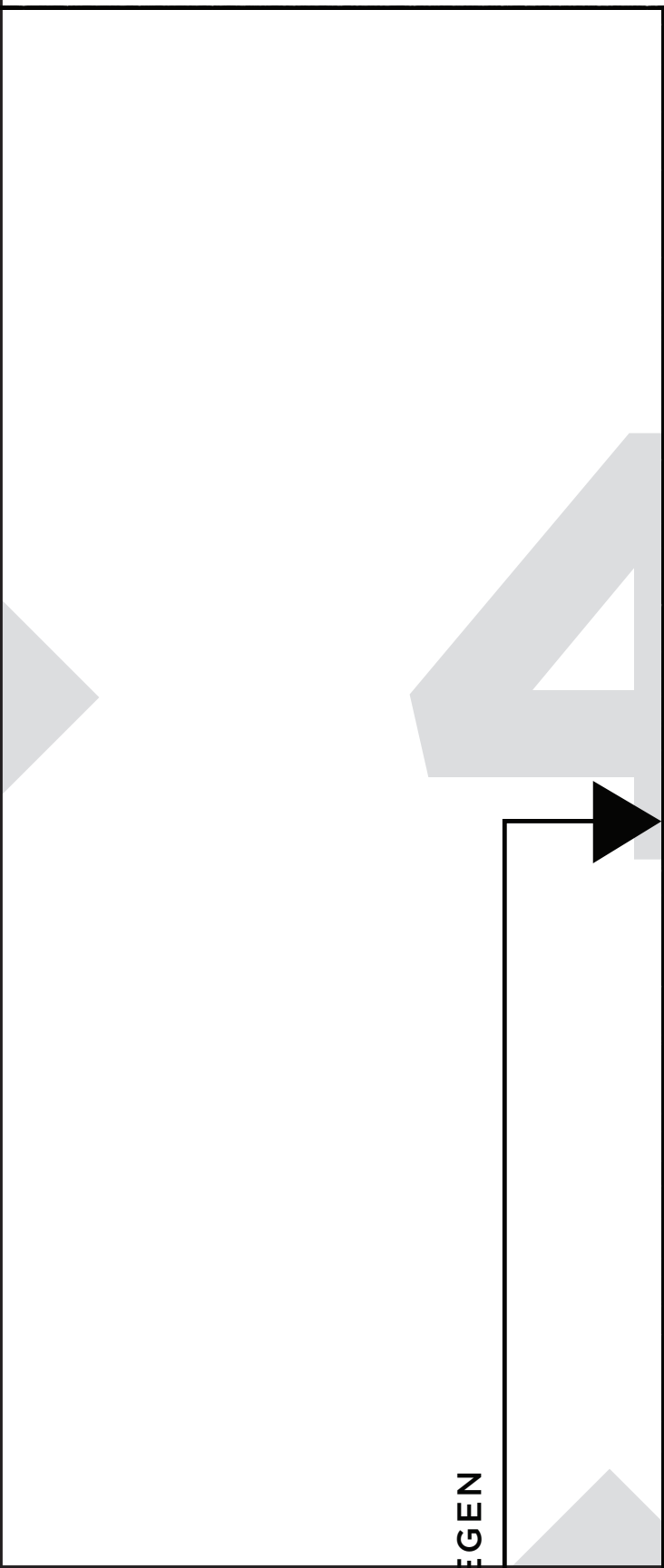
6

4

2

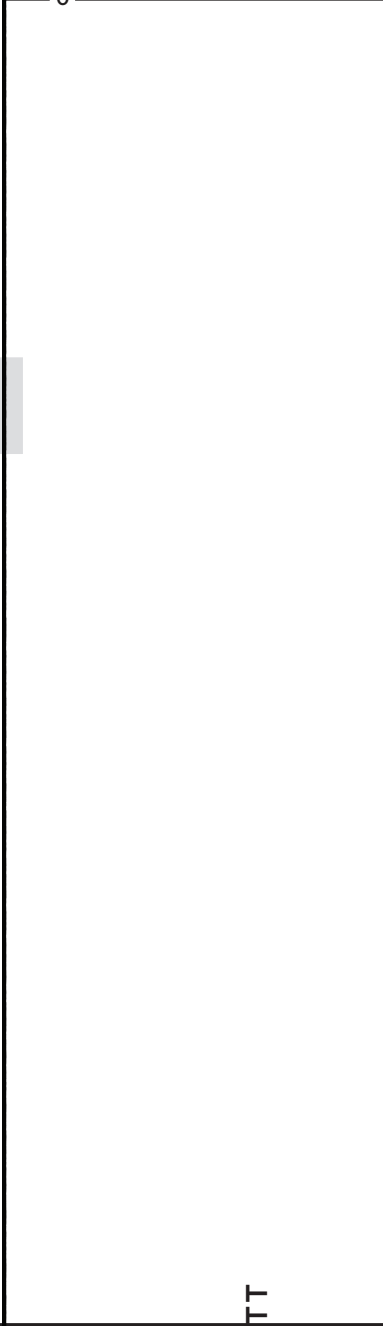
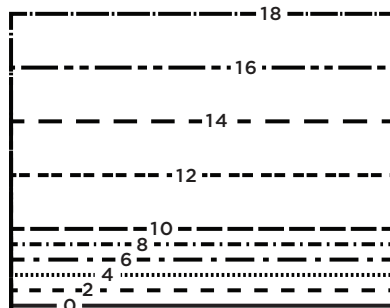
0

3

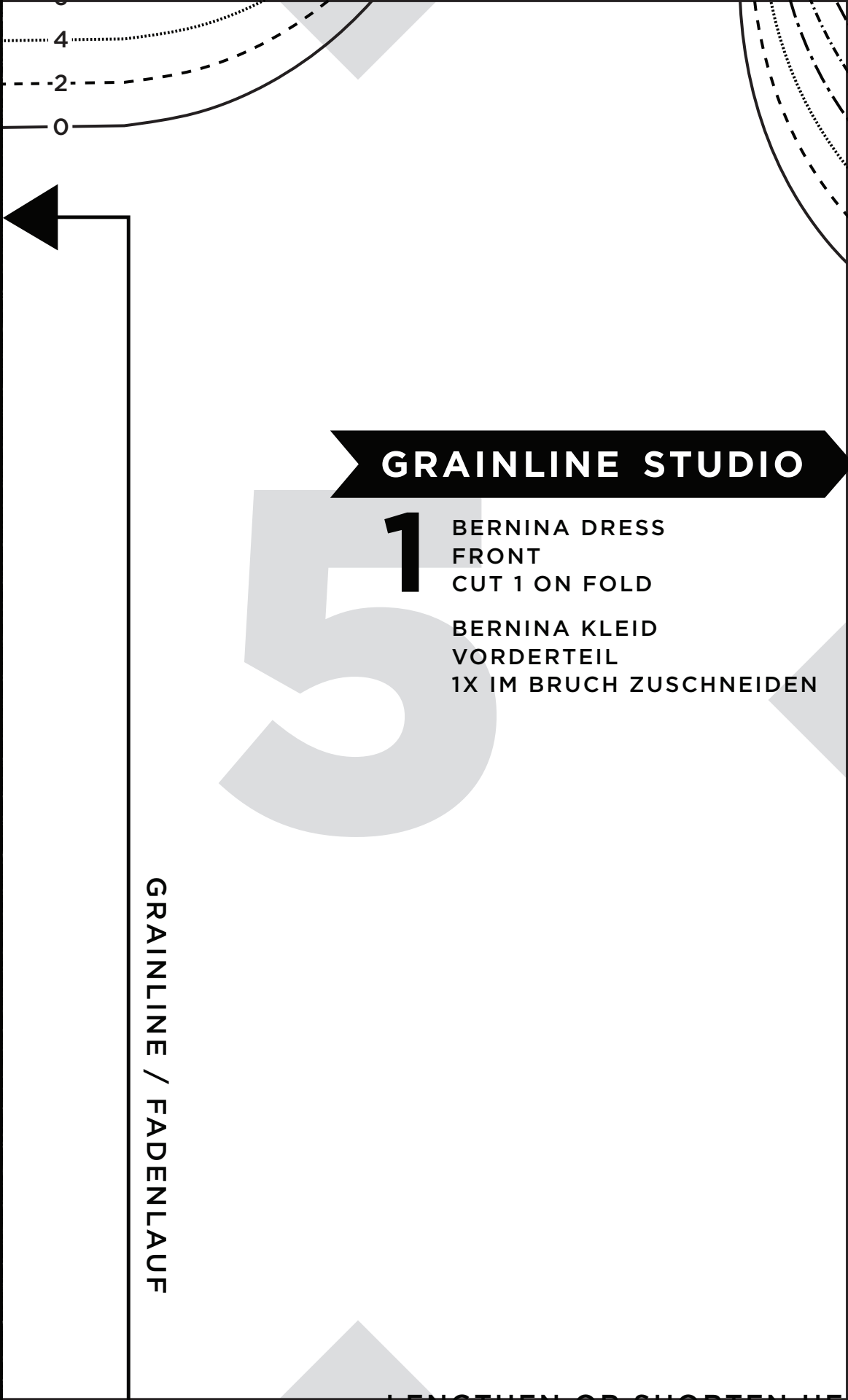


EGEN

44



TT



0
2
4

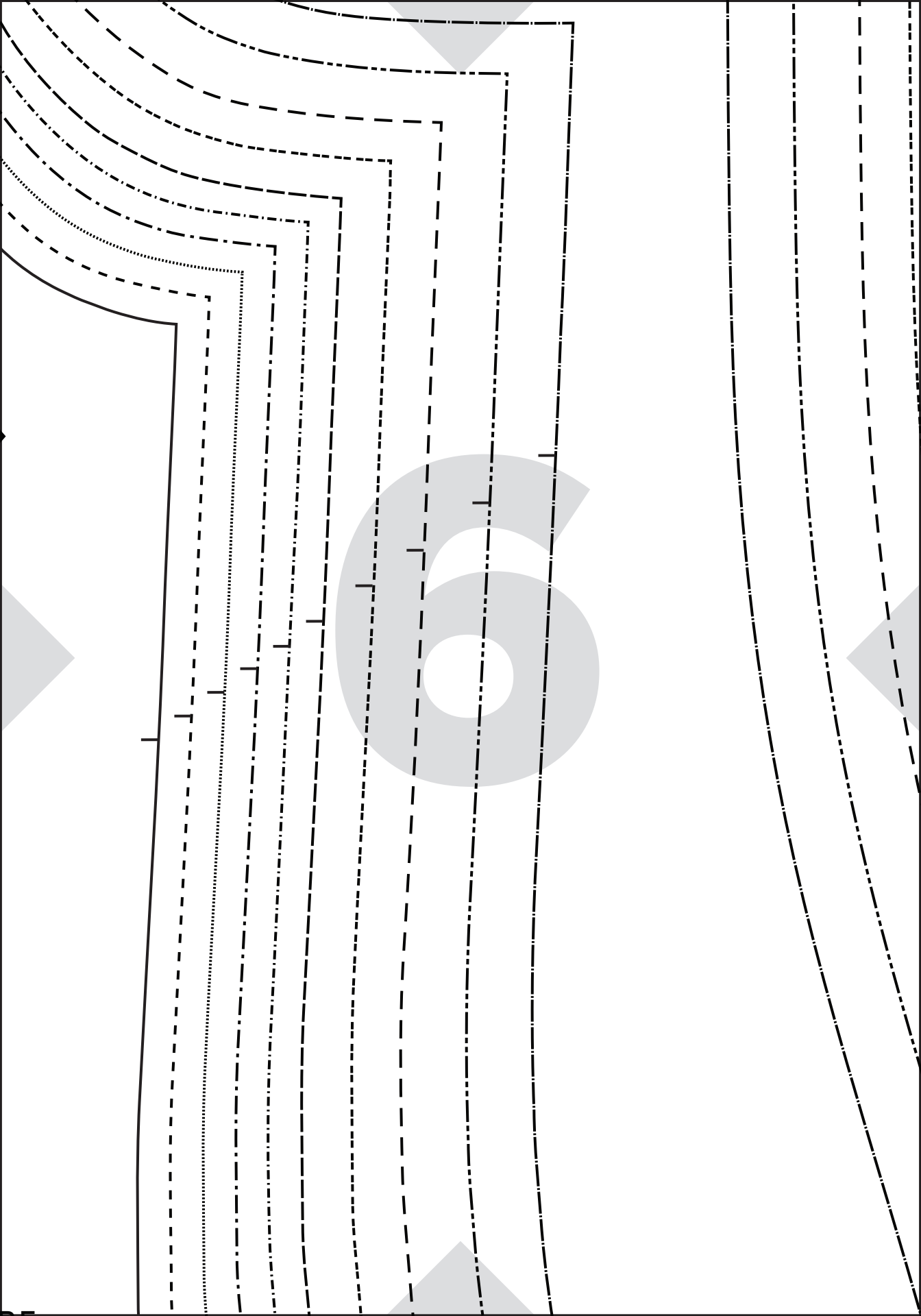
GRAINLINE STUDIO

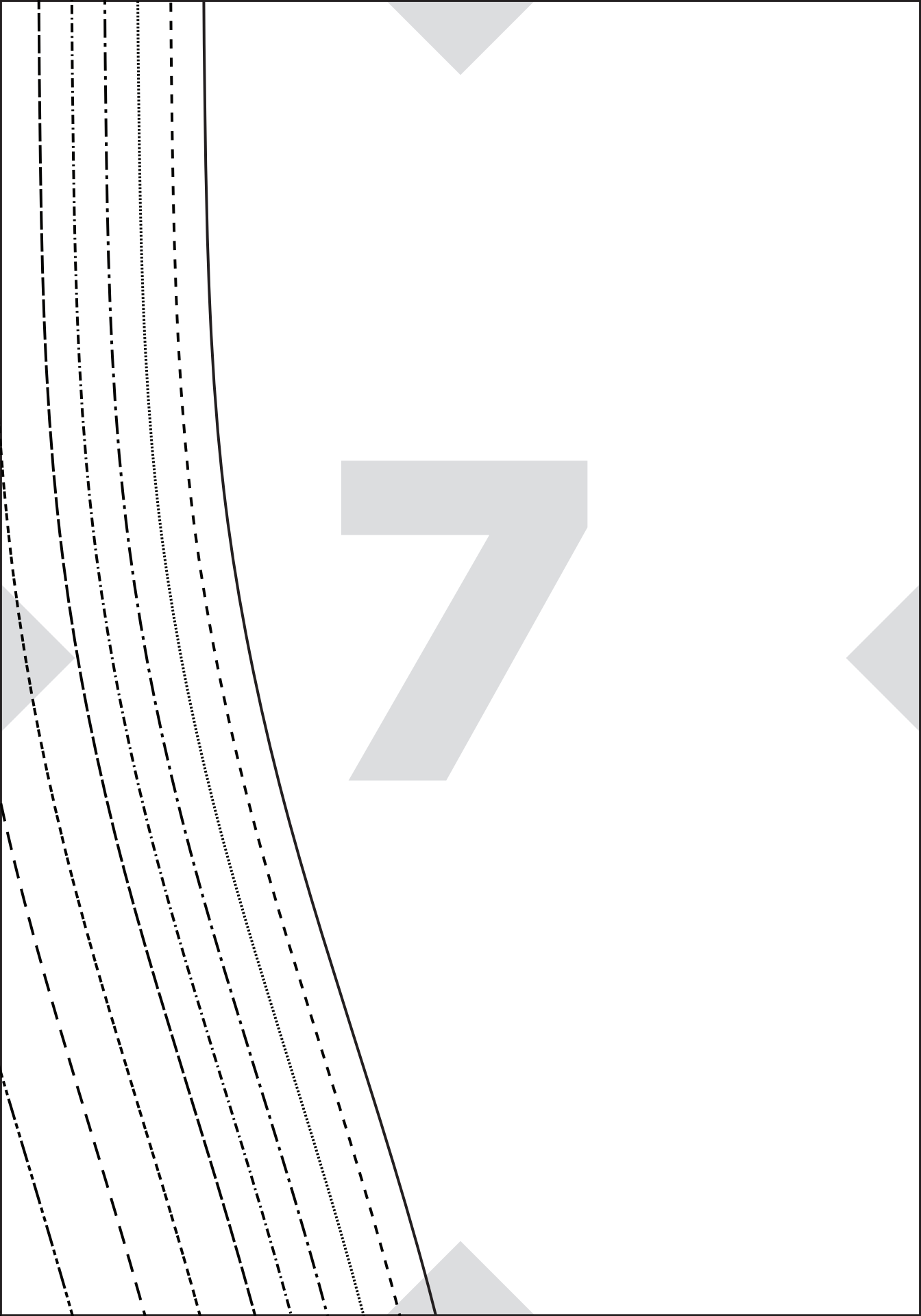
1

BERNINA DRESS
FRONT
CUT 1 ON FOLD

BERNINA KLEID
VORDERTEIL
1X IM BRUCH ZUSCHNEIDEN

GRAINLINE / FADENLAUF





BACK / RÜCKWÄRTIGE MITTE

PLACE ON FOLD / AUF DIE BRUCHLINIE LE

GRAINLINE

GRAINLINE STUDIO

3

BERNINA DRESS
NECKLINE BINDING
CUT 1

BERNINA KLEID
EINFASSUNG FÜR HALSAUSSCHNITT
1 X ZUSCHNEIDEN

LENGTHEN OR SHORTEN HERE

HIER VERLÄNGERN ODER KÜRZEN



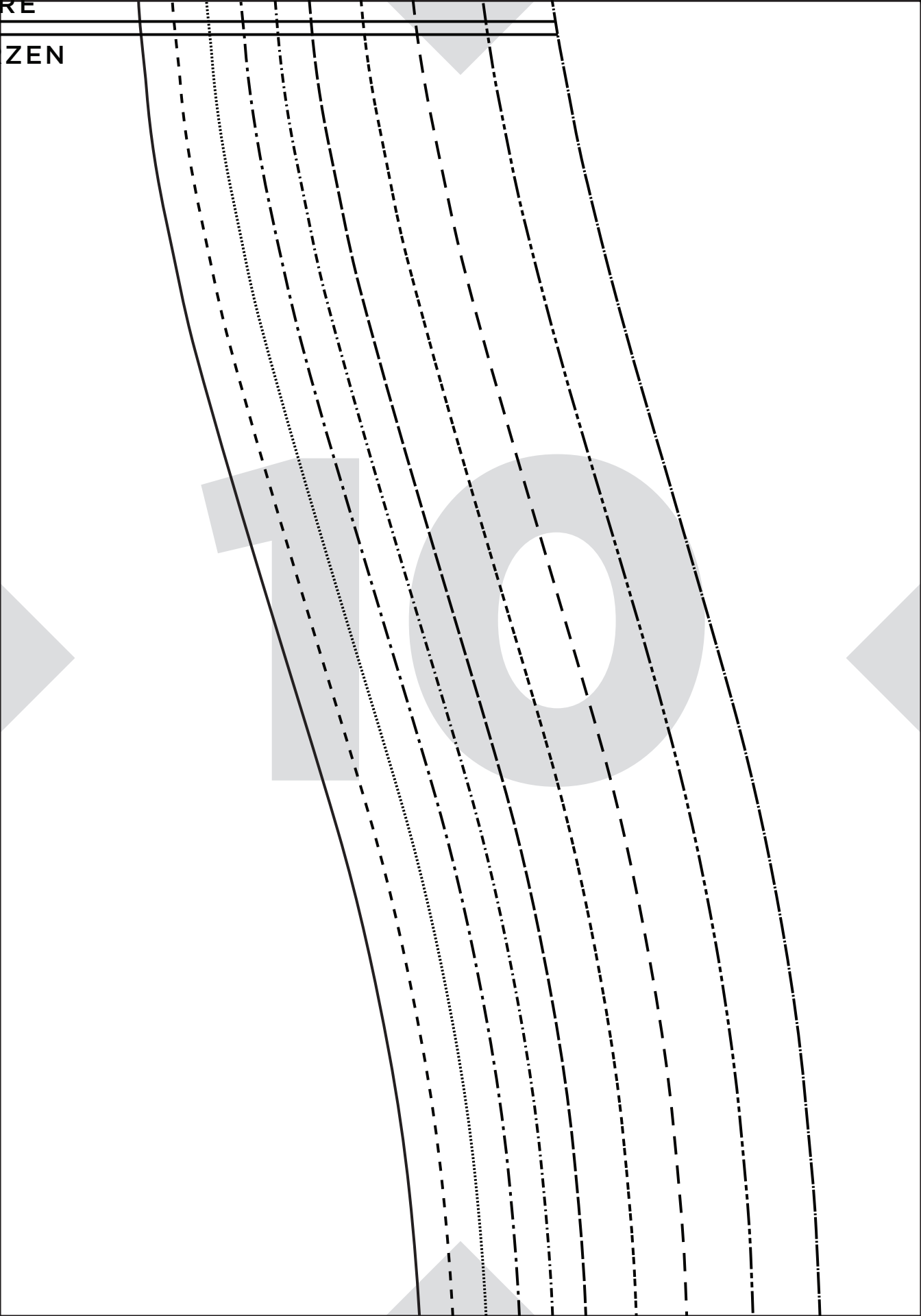
PLACE ON FOLD / AUF FALTSTELLE

CENTER FRONT / VORDERTEIL MITTE

RE

ZEN

10



NE STUDIO

NA DRESS

ON FOLD

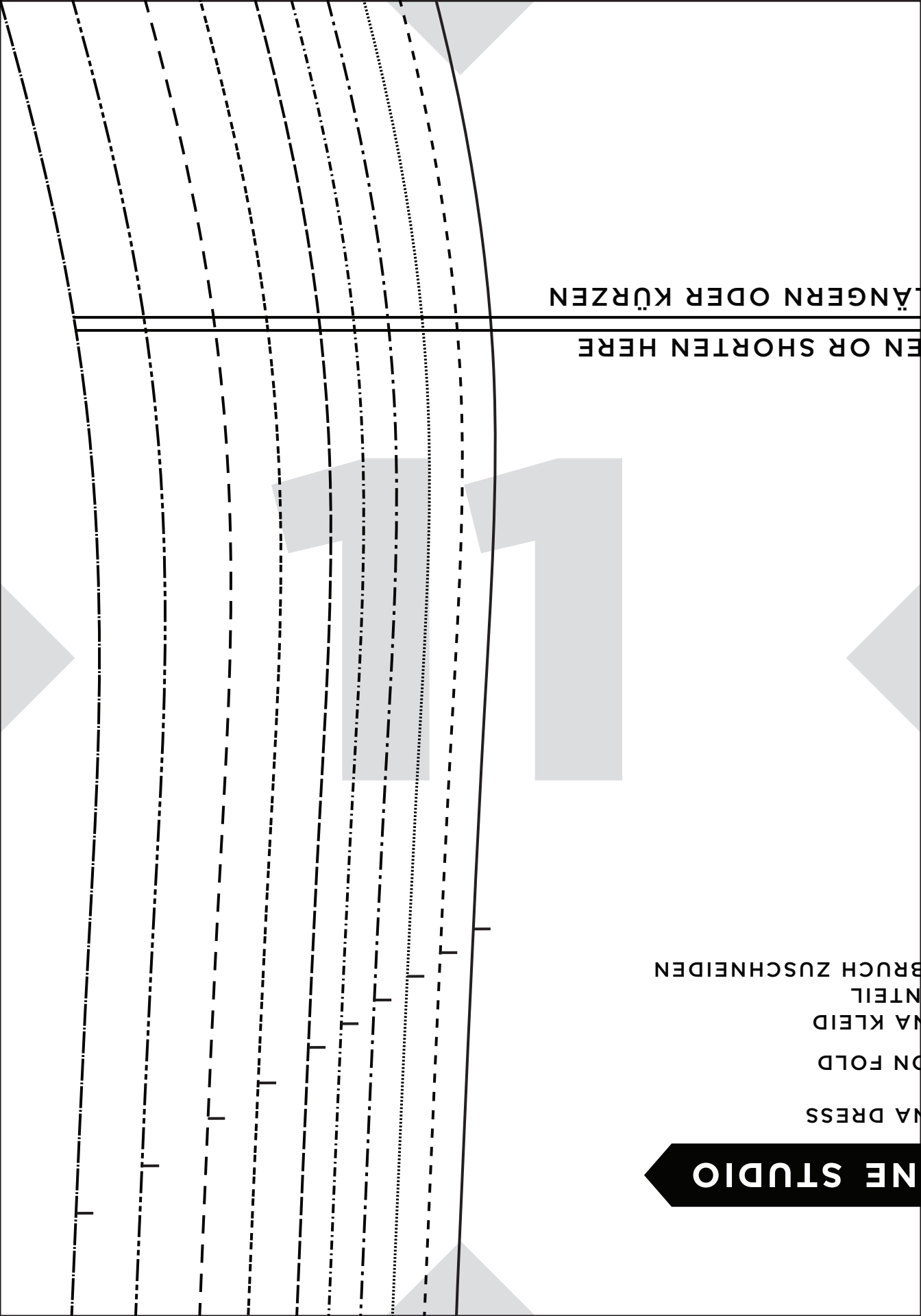
NA KLEID

NTEIL

BRUCH ZUSCHNEIDEN

EN OR SHORTEN HERE

LÄNGERN ODER KÜRZEN



GRAINLINE

2

BERNIN
BACK
CUT 1
BERNIN
RÜCKE
1 X IM

GRAINLINE / FADENLAUF

CENTER

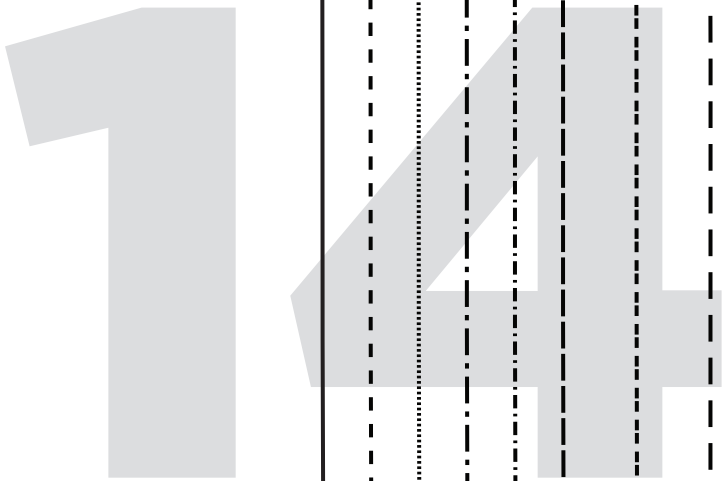
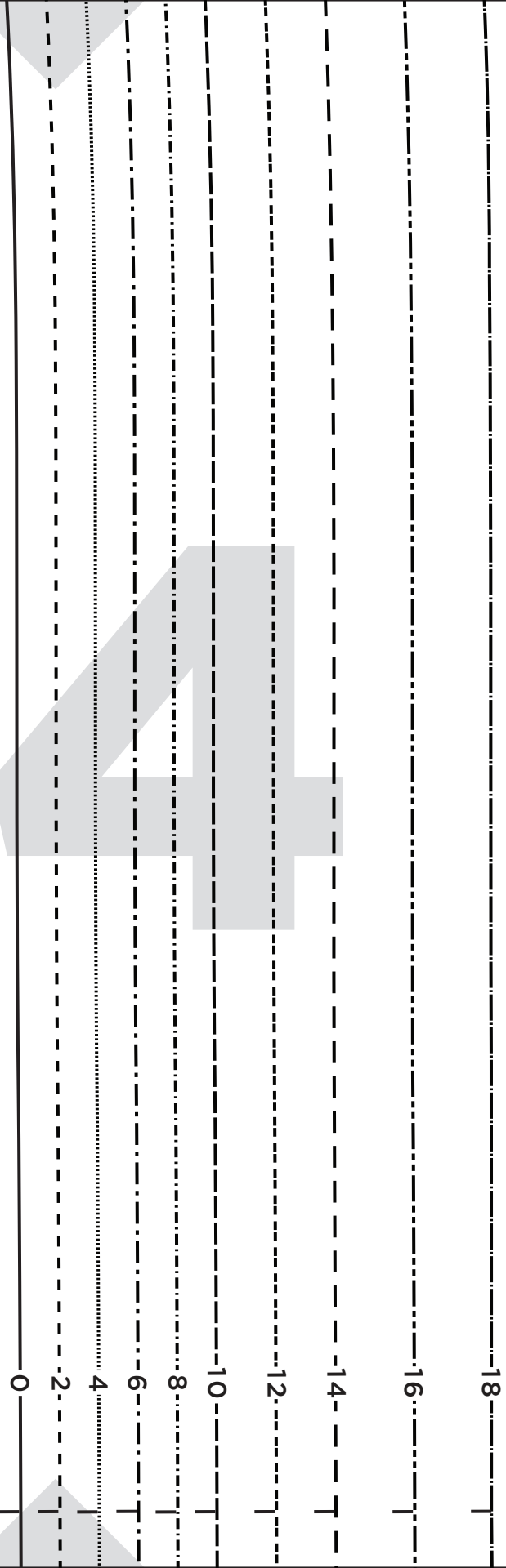
LENGTH

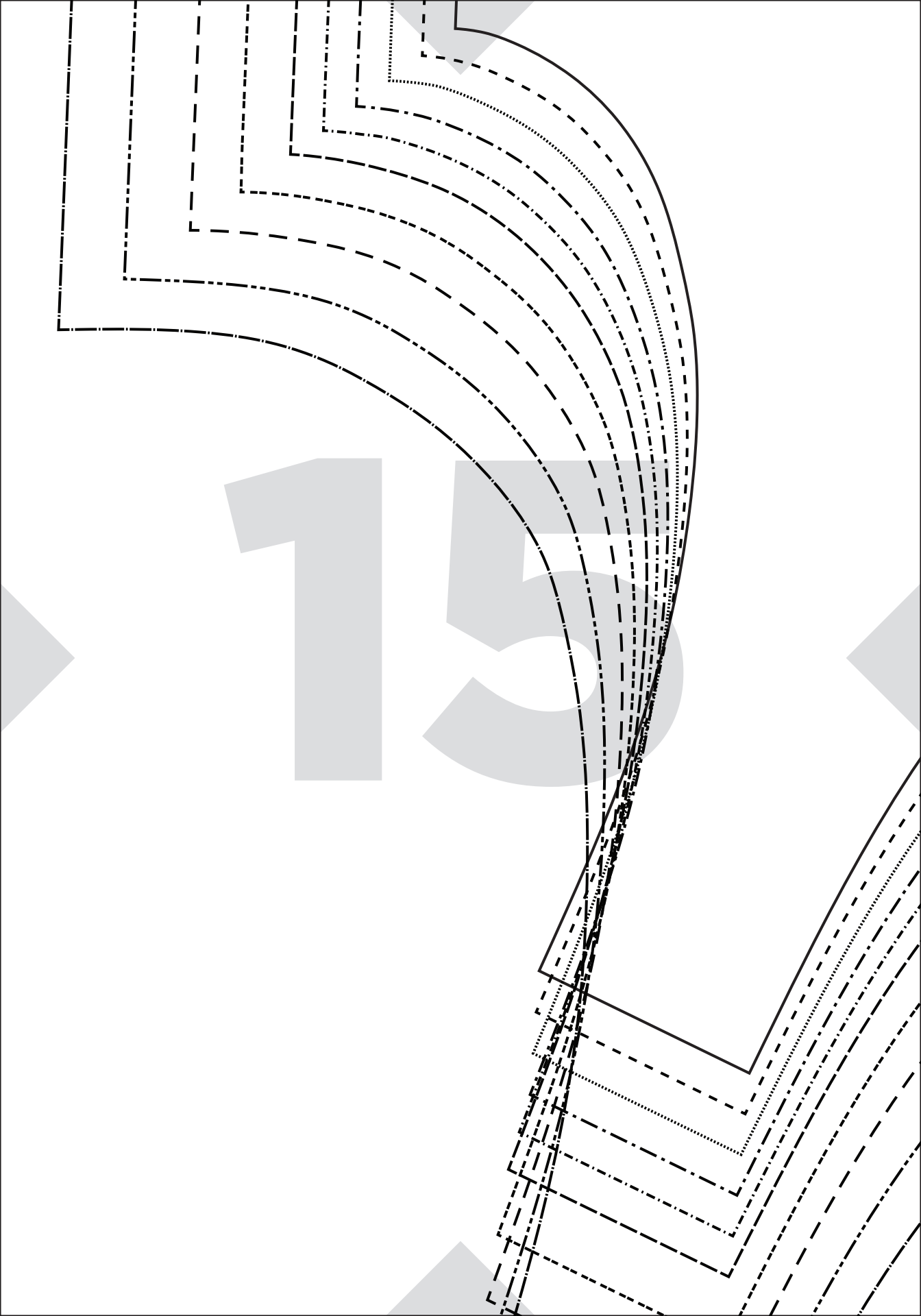
HIER VERL

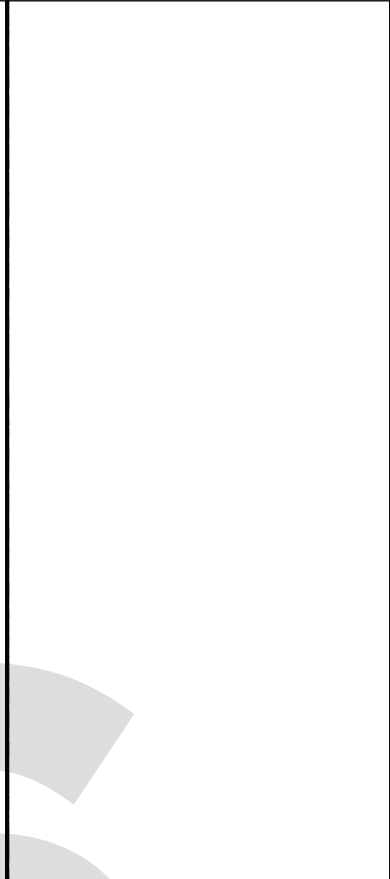
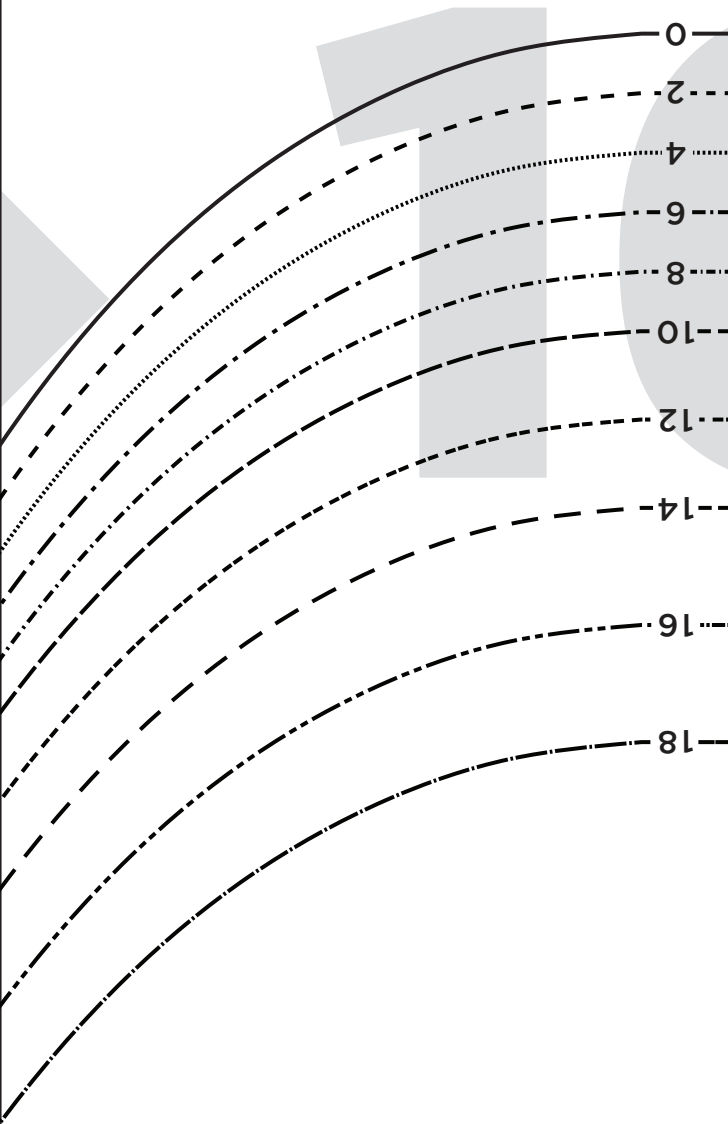
AUF DIE BRUCHLINIE LEGEN

13









17

GRAINLINE



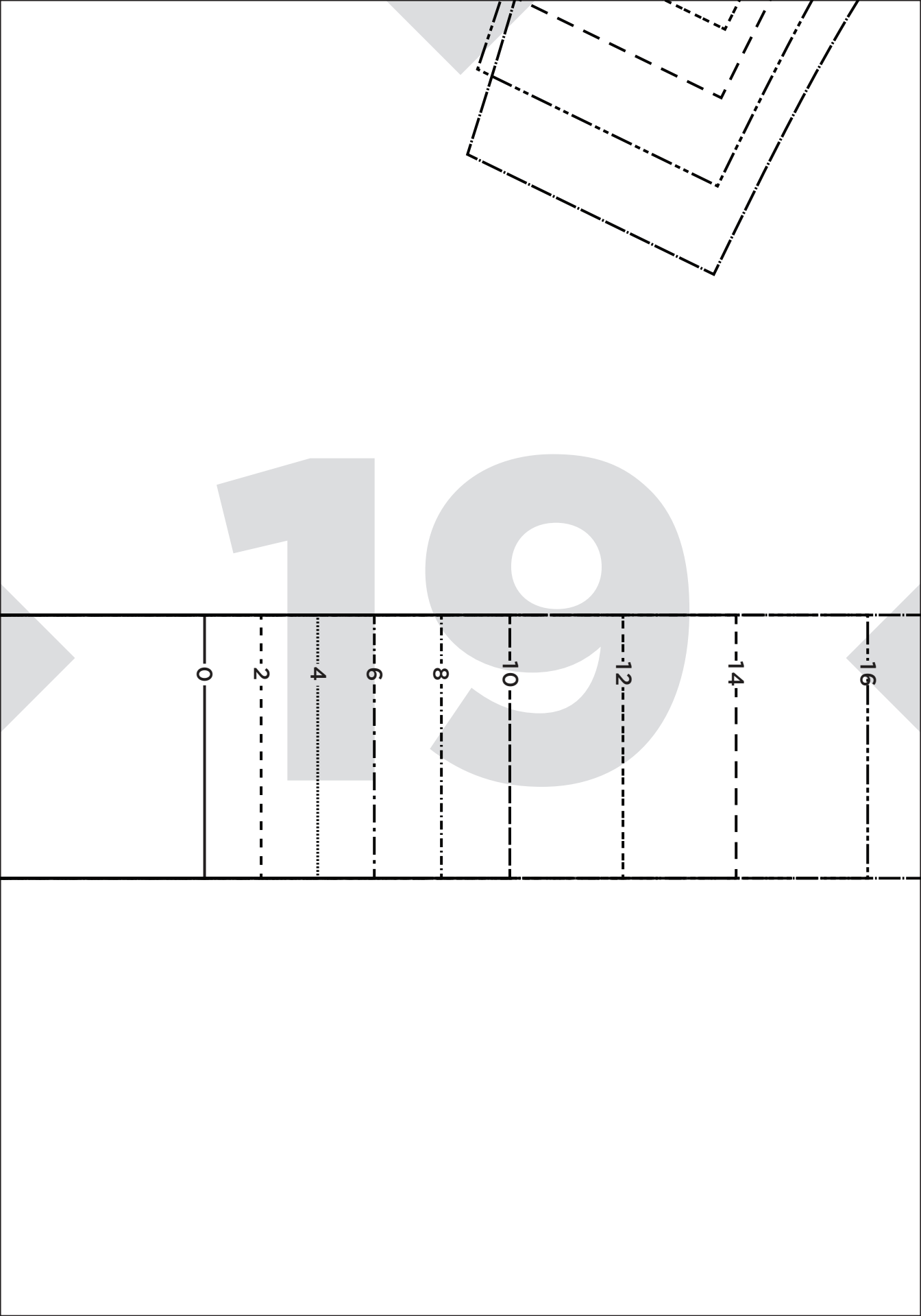


GRAINLINE STUDIO

4

BERNINA DRESS
ARMHOLE BINDING
CUT 2

BERNINA KLEID
EINFASSUNG FÜR ARMAUSSCHNITT
2 X ZUSCHNEIDEN



16

14

12

10

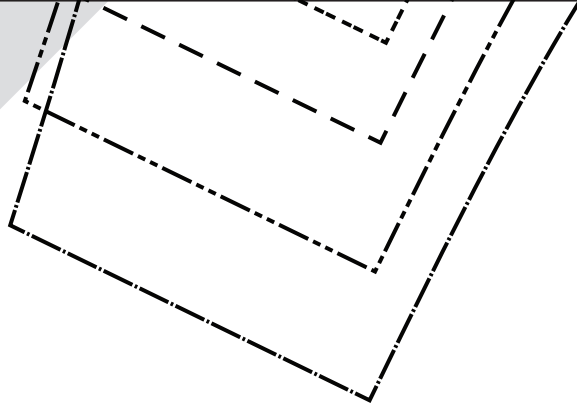
8

6

4

2

0



BERNINA FITTED KNIT DRESS | PATTERN NOTES BERNINA-PASSFORM-STRICKKLEID MUSTERHINWEISE

All seam allowances are included, you do not need to add additional seam allowances. Please see instructions for seam allowance widths.

Alle Nahtzugaben sind enthalten, Sie müssen keine zusätzliche Nahtzugabe hinzufügen. Bitte beachten Sie die Hinweise zu den Nahtzugabenbreiten.

Size Guidelines	—— 0	- - - - 2 4	- · - · - 6	· - · - · 8
Grösse Richtlinien	- - - - 10	- · - · - 12	- - - - 14	· - · - · 16	- - - - 18










Size Chart (Inches) / Grössentabelle (Inches)

Size/Grösse	0	2	4	6	8	10	12	14	16	18
Bust/Oberweite	32	33	34	35	36	37	38 ½	40	42	44
Waist/Taille	25	26	27	28	29	30	31 ½	33	35	37
Hip/Hüfte	35	36	37	38	39	40	41 ½	43	45	47

Size Chart (Centimeters) / Grössentabelle (Centimeters)

Size/Grösse	0	2	4	6	8	10	12	14	16	18
Bust/Oberweite	81.2	83.8	86.3	88.9	91.4	93.9	97.7	101.6	106.6	111.7
Waist/Taille	63.5	66	68.5	71.1	73.6	76.2	80	83.8	88.9	93.9
Hip/Hüfte	88.9	91.4	93.9	96.5	99	101.6	105.4	109.2	114.3	119.3

Pattern Symbol Key / Zeichenerklärung Des Musters

-  Notch / Kerbe
-  Pivot or Matching Point / Dreh- oder Treffpunkt
-  Dart Point / Abnäherpunkt
-  Button, Snap, or Hook & Eye Placement / Platzierung von Knöpfen, Druckknöpfen oder Haken und Ösen
-  Gather between these points / Zwischen diesen Punkten einreihen
-  Buttonhole / Knopfloch
-  Grainline / Fadenlauf
-  Place Pattern on Fold / Schnittteil auf die Bruchlinie legen
-  Lengthen and Shorten Lines / Linien verlängern und verkürzen

18